

INSIDE OUT

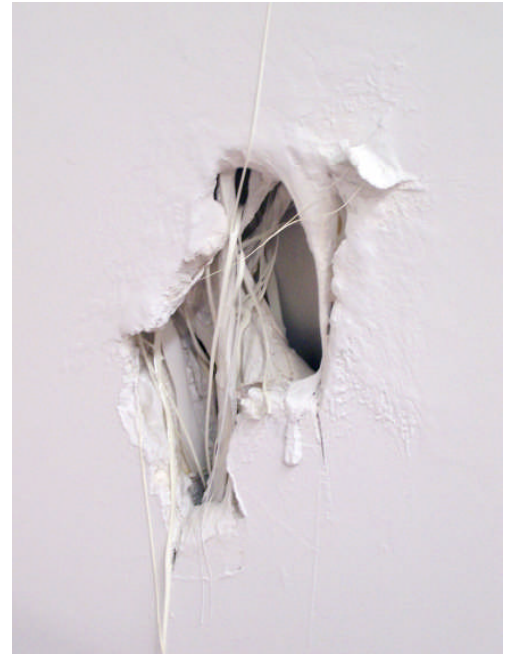
Featuring the art of

**Charlie Franklin, Rachel Kohn, David Marron,
Helen Owen & Nana Sachini**

4 August - 1 October 2009

'Who looks outside, dreams; who looks inside, awakes' Carl Jung.

GV Art presents 'Inside Out', a group show which uncovers the ambiguous mindscapes lurking within each of the five artists work. The exhibition stems from the desire to explore the indescribable sensations of a fragmented internal world. Snatches of memory and perception, whether visual, tactile, or emotional are vigorously explored and exposed here. The use of obsessive materiality is a key element in each of the artists work. This is demonstrated through the way in which the group respond to their chosen medium whether it be sculpture, installation, painting or filmed performance.



Rachel Kohn 'Wall Veins'

Undeniably, the group process their ideas in varying ways; from the construction of splintered narratives, to the use of compulsive repetition to convey meaning. The final outcomes are all drastically different, whether absurd, joyful, frightening or touching.

Though these distinctions are clearly apparent, the artists are united in the way they produce and find visual pleasure in their explorations. Knowledge is gained from the act of constructing their own specific work. As Jung suggests, this internal expedition through the external engagement with materials opens up new avenues of learning and meaning; it wakes the artist up.

The result is rich and stirring, acknowledging a plethora of influences and experiences, translating them into a visual language which draws attention to each individuals own idiosyncratic conclusions, whether difficult and perplexing, or humorous and tender.

Charlie Franklin utilises the architectural forms of the gallery to adapt and transfer her use of materials. Composition of objects within the space creates a lyrical dialogue and a map like system for the viewer to explore.

Rachel Kohn uses the wall not just as a place to exhibit work on, but also as a space for her organic, root-like structures to grow into and out of, actively becoming part of the space. Her forms seem to be simultaneously thriving and dying.

David Marron creates intricate sculptures concerned with anatomy. His work stems from a fascination with life; it's peculiarities, banality, complexity, and humanity. He creates assembled oddities, bred to provoke and sustain thought, humour and emotion.

Helen Owen aims to allow the viewer to interact with the objects in her 'domestic environment', as they reflect on the dominant role they once played. Smothered with Op Art pattern, their identity is lost as they are gazed upon, laughed at and criticized.

Nana Sachini is preoccupied with the human body as an origin for emotions such as desire and anxiety. Her work revolves around the interrelationship of pre linguistic communication, creativity, gender and sexuality.

For further information or images please contact the gallery on 020 8408 9800 or info@gvart.co.uk

Visitor Information

Gallery opening hours: Tuesday to Friday 11am - 7pm, Saturdays 11am - 4pm

INSIDE OUT

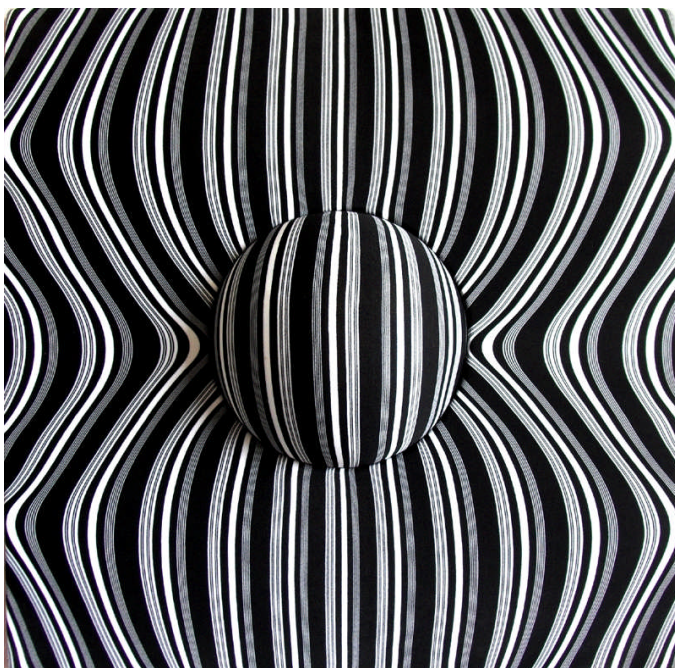
Group Show



Rachel Kohn - *'Passage Ending 1'*



Nana Sachini - *'Pleasure Pillow'* (Film Still)



Helen Owen - *'Bouncing Back Again'*



David Marron - *'Thoracic Park'*



Charlie Franklin - *'Tundra'* (Detail)