

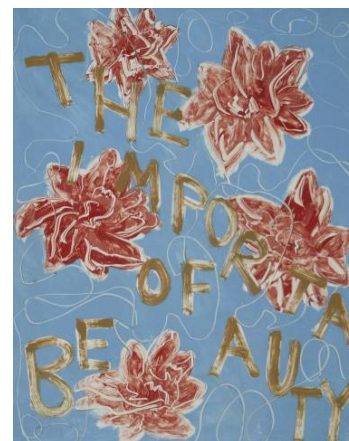
THE IMPORTANCE OF BEAUTY

The Art of Ina Rosing

25 June - 25 July 2009

From immovable mountains to vibrant red flowers, ice and porcelain blue skies, Ina Rosing's work on canvas and in monotype reflects her interest in beauty and silence. Combining text with a free flowing style, her work is both focused on the landscape, weather and space of Greenland and on her own emotional landscape.

Images of women, mountains, dogs and ice combine with fragments of poems and single words to form delicate patterns, which are both decorative and charged with passion. Her monotypes employ a muted palette of blue, black and red. This very particular blue is - "both silent and fragile. It may be used for a very, very blue sky, which insists on happiness. It can also be ice, still and cold or broken in a thousand flakes when the world breaks apart."



Shown alongside the 20 Monotypes will be a selection of larger canvases. Here the range of colours is broader, the application of paint wilder, leading to a freer more abstract feel. On one level the work is enchantingly decorative on another level it is deeply personal. In certain instances her graffiti like text also carries clear political and environmental messages.

Well-known in her native Denmark, Ina Rosing has regularly received commissions to produce images for the Greenland's stamps. This is her first UK solo show.

**For further information or images please contact Penny Sychrava PR 0796 791 5339
pennysychrava@hotmail.com**

Visitor Information

Gallery opening hours: Tuesday to Friday 11am - 7pm, Saturdays 11am - 4pm

Artists Biography

Originally from Denmark, but with family ties to Greenland, Ina Rosing's development as an artist was influenced by several years spent in Greenland as a child, including four months working for a gold exploration project on the deserted and rough eastern coastline. The daughter of an artist, Ina had already started painting before she went to study architecture at the Royal Danish Academy of Arts and was invited to show her work in several prestigious exhibitions. Since leaving the Academy, Ina's work has been exhibited throughout mainland Europe and she has also undertaken commissions for the Greenland Home Rule Government (GHRG), as well as illustrating several books and designing 15 stamps for Post Greenland.

INA ROSING

The Importance of Beauty

